



By ISHIDA

# Automatic Wrapping Machines WM-AI-Auto-Infeed

An epic invention: the automatic wrapper with in-feeding conveyor!  
That's right, it's got an integrated scale and label applicator too.

## Looking for a production line superstar?

This auto-infeed wrapper is the perfect catch for small or large batch production, with a design that's both user-friendly and hygienic.

Say goodbye to tray transport hiccups and hello to seamless flexibility for ever-changing markets. Compact but mighty, this production pal has a small footprint that lets you create ergonomic layouts for your line. Weighing, wrapping, and labelling are all in one handy unit, with an integrated scale and label applicator that fit neatly into your production flow.

Best of all, it's easy to operate and even easier to load up with consumables, so any member of your team can be a production hero with the ISHIDA Wrapper Range.



## Features:

- This machine is the ultimate triple threat, it can weigh, wrap, and label all at once!
- Perfect for small-batch productions and with a sturdy transport mechanism, it's sure to stay stable.
- Cleaning is no sweat with its simple design and loading film and labels is a breeze.
- Plus, it saves significant space, so you can keep it anywhere!

[www.avocetscales.co.za](http://www.avocetscales.co.za)

Follow us on Social Media @



[enquiries@avocetsa.co.za](mailto:enquiries@avocetsa.co.za)

Don't hesitate, give us a shout today!  
Snag a FREE demo by reaching out!  
We've got all your weighing, printing, labelling, and barcoding needs covered, whether you're a retail rebel or an industrial giant.



\* Specifications & information can change at any time without prior notice. T's & C's Apply! Images are not to scale\*



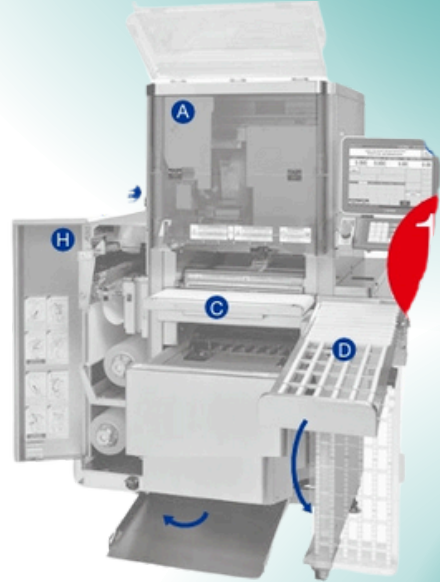
By ISHIDA

# Automatic Wrapping Machines

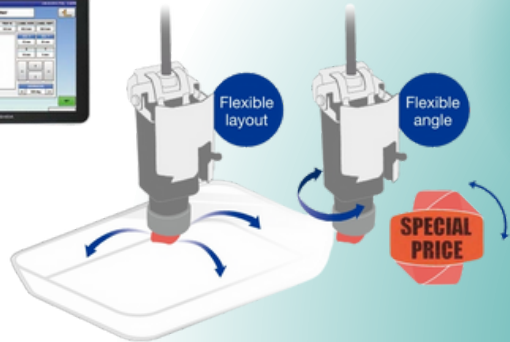
## WM-AI-Auto-Infeed

An epic invention: the automatic wrapper with in-feeding conveyor!  
That's right, it's got an integrated scale and label applicator too.

- A** Attractive tinted plastic cover encloses the printer and applicator, providing protection to the operator whilst at the same time allows a clear view to observe the labelling process.
- B** Intuitive 12.1 inch color LCD touch panel display permits simple method to review product data, select functions, recall training videos and display operator messages or instruction. With such a simple touch panel the operators need very little training and within a very short time become comfortable with the operation of the machine.
- C** Environment friendly system, 30% energy savings, compared to previous generations of ISHIDA wrappers, using sleep mode and an optional operator motion sensor. Solid State Drive (SSD) with no mechanical movement eliminates hard disk failure and consumes less battery power.
- D** Adjustable height stock conveyor with 3 incline angle positions.
- E** Requires only a single phase power supply, 200 - 240V. No longer restricted to sites with 3 phase supply.
- F** Reduced number of electronic circuit boards, compared to previous generations of ISHIDA wrappers, where possible the PCBs are mounted vertically to improve pest control.
- G** Optional Wireless LAN kits available to create a system free from the burden of network cabling.
- H** The two film rolls are mounted above each other on the left hand side, a design that allows the machine width to be reduced. A stainless steel door protects the film from damage and forms an enclosure that can be heated in cold environments.



Check out these mind-blowing specs!



[www.avocetscales.co.za](http://www.avocetscales.co.za)

Follow us on Social Media @



[enquiries@avocetsa.co.za](mailto:enquiries@avocetsa.co.za)

Don't hesitate, give us a shout today!  
Snag a FREE demo by reaching out!  
We've got all your weighing, printing, labelling,  
and barcoding needs covered, whether you're a  
retail rebel or an industrial giant.

